



# CARING FOR LIFE

—  
Cipla Foundation  
in Indore  
2022



 / ciplafoundation

Cipla Ltd. Plot no 9,10 & M14, Pharma Zone, Phase-II, Indore SEZ, Pithampur, Sector-III, Dist. Dhar,  
Madhya Pradesh 454775

To know more about our CSR initiatives, please write to us at [info@ciplafoundation.com](mailto:info@ciplafoundation.com)

©Cipla Foundation 2022. All rights reserved. Names are changed for representational purposes only.



## About Cipla Indore

---

Inaugurated in 2010, the Cipla Indore unit is located in the Pithampur Industrial Estate in the Dhar district of Madhya Pradesh. Spanning across 37 acres, Cipla Indore has been built in the Indo-Saracenic architectural style, with four units that specialise in the manufacture of formulations such as Form Fill Seal (FFS) respules, FFS eye drops, liquid orals, Metered Dose Inhalers (MDI), nasal sprays, tablets, hard gelatin capsules, effervescent tablets, pellets and powder sachets.

Our site in Indore is amongst Cipla's 40+ manufacturing units around the world. Cipla is a global pharmaceutical company that produces 50+ dosage forms and 1,500+ products. We are committed to ensuring access to high quality and life-saving medicines.



I speak for every Ciplaite when I say that we are united in our quest to care for every life. Through our Foundation, we support initiatives that advance access to quality healthcare and education. I am proud to be a volunteer and am inspired by our communities every day.

**Geena Malhotra**

Global Chief Technology Officer

# About Cipla Foundation

Cipla's vision for an equitable world is built on the foundation of 'Caring for Life.' At Cipla, we recognise the importance of building long-term relationships with all our stakeholders and working collaboratively to achieve positive social change. Our work in the community is carried out through Cipla Foundation. The Foundation works with credible institutions, NGOs, government agencies and domain experts to enhance the outreach of our CSR initiatives.

Cipla Foundation works across four focus areas: Health, Education, Skilling and Disaster Response.

## WE WORK ACROSS INDIA

In **15+**  
States

With **50+**  
Partners

Across **100+**  
Towns and Villages



## We Envision:

An equitable world built on the foundation of 'Caring for Life'

We work across four key thematic areas



HEALTH



EDUCATION



SKILLING



DISASTER RESPONSE

## Leader's Speak



The concept of giving back has always been an integral part of Cipla's culture. We believe that Cipla's contribution has a meaningful impact on the development of a more sustainable society.

The Foundation's initiatives on Health, Education, Skilling, and Disaster Response are purpose-driven as they are grounded in the needs of the people and their communities. We endeavor to touch and transform lives and create access to basic rights.

**Ashish Zitshi**  
Site Head



Every year, we strengthen our initiatives to truly mirror the values of Cipla and strive to take compassionate care closer to communities.

Together with our partners, we have been working to bring quality health, skilling and education within the reach of vulnerable communities.

**Anurag Mishra**  
Head, Cipla Foundation



**Cipla's social initiatives in Indore began in 2014**

The Foundation is currently working across

**30+**

Villages &  
Hamlets

**30+**

Schools

**65000+**

Community  
members

**10**

Anganwadis\*

\*Under the Government of India's Integrated Child Development Scheme (ICDS), an Anganwadi centre provides basic health, nutrition and early childhood learning initiatives at the village level.

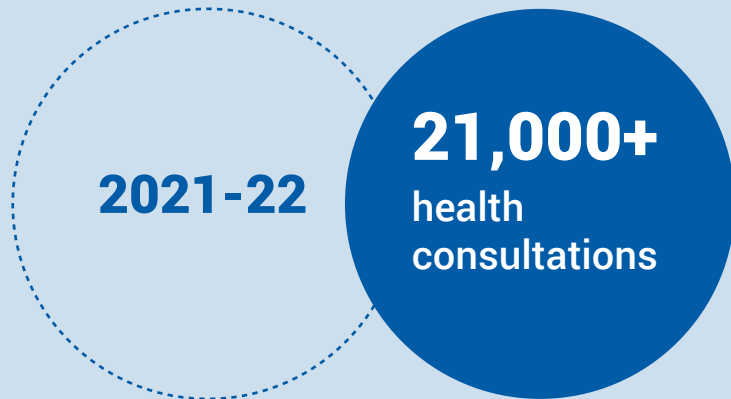


# HEALTH

## Driving Healthcare Home

Launched in partnership with HelpAge India in 2014, our Mobile Healthcare Unit (MHU) provides free-of-cost primary healthcare to the doorstep of vulnerable and under-served areas across 9 villages.

The MHU has a doctor, pharmacist and social protection officer providing healthcare consultations that include diagnosis, treatment and referrals for patients especially women, children and the elderly. In addition, the MHU drives awareness of preventive measures and creates linkages between communities and the Government health system.



65-year-old Girish Choudhary was living with high blood pressure. Getting regular checkups and medication meant he had to travel a far distance to the hospital which was miles away from his village. Unable to afford regular commutes for his treatment, he would miss his medication. With the MHU coming to his village, he is now able to keep his blood pressure in check.

**Girish Choudhary**  
Indore

# Making Palliative Care Accessible

Palliative care is specialised medical care focused on relieving the pain, symptoms and stress of a serious illness. Palliative care is from diagnosis, for children and adults and for their families. The goal is to provide the best possible quality of life at every stage.

In partnership with the **Indore Cancer Foundation (ICF)**, we have set up an integrated palliative care OPD at their hospital. All patients and their families have access to multi-disciplinary care.

The palliative care team works very closely with the patient's physician. This ensures that the needs of the patient and their families are addressed.



2021-22

650+  
patients  
supported



Savita was diagnosed with cancer and complained of unbearable pain. This resulted in disturbed sleep, reduced appetite and anxiety. On being referred to palliative care at the Indore Cancer Foundation, she immediately received pain relief. Counselling helped her deal with her anxiety and her appetite improved significantly. Savita is happy to have her palliative care team by her side as she undergoes further treatment.

**Savita Rahane**  
Indore

## Strengthening Anganwadi Centres

In partnership with the Center for Advanced Research and Development (CARD), we initiated an Anganwadi development project in 2018 in the villages of Kalibillod and Bardari near the Cipla manufacturing unit in Indore.

Through the training of Anganwadi workers, conducting health awareness sessions, and supporting immunization drives in line with standard government directives, the project strengthens the Anganwadi, improving access to healthcare and nutrition.



2021-22

**950+**  
children and  
adolescents  
reached through  
10 Anganwadi  
centres



In this new Centre, we have enough space to sit and lots of toys for our children to play with and we are made aware of how to plan a more balanced and nutritional diet for our children.

**Meenal Yadav**  
Indore



## EDUCATION

### Digital Learning Education and Development (D-Lead)

With a goal to make education inclusive and equitable for all children, we launched a digital literacy initiative. D-Lead gives a seamless digital learning experience to students by providing tablets pre-loaded with content in regional languages for classes 9 and 10, structured to their state board curriculum.

Distributed to children from government and government-aided schools near Cipla units, this initiative advances the government's National Education Policy which emphasises digital education. During COVID-19, this digital access gave our children the tools to continue learning even as schools remained closed.



2021-22

**500+**  
students and  
teachers from  
8 schools  
supported  
with tablets



### Creating Awareness on COVID

As schools re-opened, it became necessary to ensure the safety of children. Through street plays, wall paintings, posters and animated movies, **7000+** children across **30 schools** learnt about physical distancing and hygienic practices.



## Mobile Science Labs (MSL)

To make the learning process for children integrated and engaging we partnered with Agastya International Foundation in 2017. We support the MSL programme, reaching out to students across 19 schools.

The MSL travels to the doorstep of schools near the Cipla Indore unit, with the objective to minimise rote learning and encourage holistic development using critical thinking, creativity and digital literacy. Through hands-on, contextual, relevant and low-cost science models, this initiative seeks to engage students deeply in the sciences as well as the application of science in everyday life.



2021-22

**30,000+**  
exposures  
through  
classroom  
sessions

### Community Engagement and Teachers' Training

Besides school-based engagement, MSLs also go directly to communities and engage people in the wonders of science, sparking interesting conversations and learning. Teacher training modules are also a critical component of this programme as it empowers teachers to learn low-cost model-making and interactive teaching techniques that promote curiosity and interest in science.

# ACROSS INDIA

## Recognising merit since 2009

Every year, we give **merit awards** to children from communities and schools in and around our Cipla units. This is a long-standing and valued tradition that salutes the spirit and the hard work of students. Against all odds, these children strive for excellence, and we encourage and applaud their efforts.

While the top three students receive this award at a special ceremony to felicitate them and honour their teachers, it is an equally important day for every single person in attendance. Most of the awardees are first-generation learners and consider this award as a wonderful recognition of their efforts and a way to continue their education.

Ciplaites come together at these ceremonies with great pride to award the winners and felicitate their teachers. Our admiration for the children, their families and teachers is acknowledged and expressed, making these events memorable for all.



2021-22

Across India, we have felicitated **570+** students



Both of us want to grow up and become engineers. When we were in class 9, we found out about the merit awards and worked really hard to win them. The awards motivated us to continue doing our best in the years to come.

**Salik Khan**  
Indore

# ACROSS INDIA

## Standing Strong for Communities in COVID-19

In collaboration with our NGO partners and the local administration we provided support to frontline workers, healthcare staff, patients, students and communities, reaching out to **3,50,000+** people across India, helping communities recover and emerge stronger. We continued our COVID-19 support by providing:

2021 -2022

**100+**  
oxygen concentrators, ventilators and COVID-19 equipment

**1,50,000+**  
masks, PPE kits and protective gears

**1,00,000+**  
people vaccinated across India

**50,000+**  
rapid antigen kits

### Supporting Hospitals with Equipment and Protective Gear



### Protecting Frontline Health Workers





## Continuing to Learn in COVID-19

Despite schools closing due to the COVID-19 pandemic, students and teachers from remote schools near Cipla units continued to learn through WhatsApp, videoconferencing and audio sessions with help from our programme partners.

**10,000**  
children engaged

## Continued Care during COVID-19

Mobile Healthcare Units continue to reach the last mile

With stringent safety protocols, the Mobile Healthcare Units continued reaching locations with free-of-cost medicines for patients with chronic conditions.

**1,800+**  
health consultations during the COVID-19 lockdown

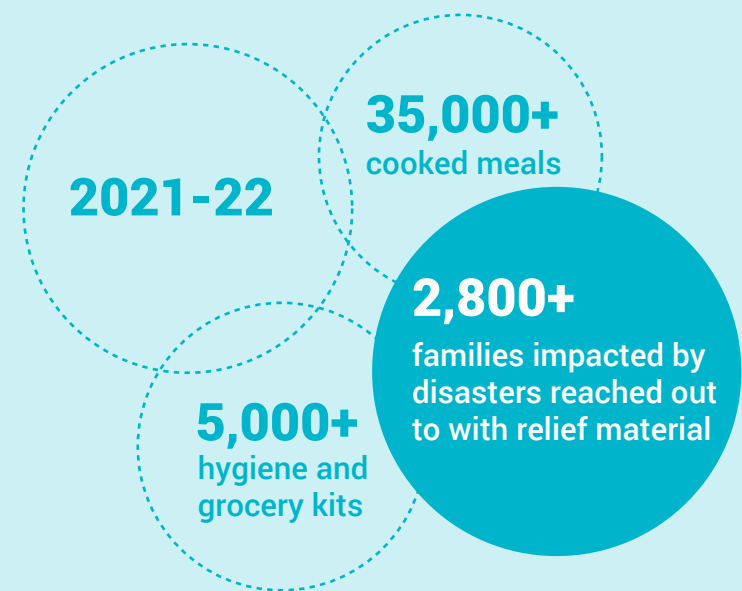


# ACROSS INDIA

## Disaster Response

Standing by communities in natural disasters  
Building resilience for the future

We support communities with immediate relief during natural disasters. In 2021- 2022, our work included flood relief in Tamil Nadu and Kerala, shelter and relief material distribution for the Mumbai landslide, as well as support during the Mahad and Chiplun floods. In Odisha, in collaboration with HelpAge India and the local administration, we distributed hygiene kits, face masks and dry ration during Cyclone Yaas.



# Cipla Palliative Care & Training Centre, Warje, Pune

Rooted in our legacy of care for the last 25 years

The diagnosis of a serious illness makes relentless physical, emotional and financial demands, not only on patients but also on their loved ones. It was to support them in their most difficult times that **Cipla founded the Palliative Care & Training Centre in 1997 in Warje, Pune**. Since then, we have served over **20,000 patients and their families** free of cost.

Today, we have **24 partners** across **18 cities** in India providing palliative care services. Together, we launched the **Saath Saath** helpline (**1800-202-7777**). This national toll-free number is staffed by trained palliative care volunteers who listen, assess, and link callers to the nearest palliative care provider. **Saath Saath** could make all the difference to someone who might be in pain and needs support. We hope that everyone will play their part in spreading awareness about the helpline.



## Cipla for Change

Ciplaites across India shared their time and skills for causes they felt most passionately about

Caring is deeply ingrained in our DNA and our compassionate approach towards people, the planet and purpose have been the force driving our history over the years. At Cipla Foundation, we endeavour to serve the communities in collaboration with like-minded partners and institutions.

**Umang Vohra**

Managing Director & Global CEO

2021-22

9,500 employees  
23,000 volunteering hours